

EDI Solutions: Trusted and Affordable EDI Technology

- › Gain greater visibility into daily operations
- › Identify and resolve inefficiencies
- › Deliver actionable information
- › Reduce redundancy and costs
- › Make decisions with confidence
- › Maximize Current IT Investment
- › Maximize the ROI for external business applications

Benefits of Radley EDI

Automate Tasks

Eliminate manual entry of orders, ASNs, and invoices. Simplify accounting, reporting, and shipping.

Streamline Communications

Send purchase orders, ship lists, invoices and more through standardized formats between trading partners.

Comply With Requirements

Ensure compliance to trading partner requirements with EDI transactions formatted to your partners' unique EDI specifications.

iR*EDI

Completely intuitive with Dashboard technology, EDI is made simple with iR*EDI. iR*EDI is our anything-to-anything translation engine and is used every day to translate X12, EDIFACT, XML, ODETTE, VDA, Tradacoms and many forms of proprietary data in many industries around the world.

Radley's 45+ years of EDI experience enables our customers achieve complete integration automation between iR*EDI and their enterprise applications. iR*EDI facilitates communications to any Value Added Network (VAN) or point-to-point connection. It provides reports on translation activity and also includes complete document journal capabilities for failsafe and recovery activities. An extensive trading partner library is already mapped and available.

iCARaS

The iCARaS component of Radley EDI will supercharge your EDI environment with complete Automotive Industry functionality from CUM management to serialized shipping labels and trading partner compliant ASNs.

Used by hundreds of automotive suppliers, iCARaS is EDI and much more.

Demand reporting, CUM management, release accounting, shipping documents, label printing, standard packaging calculations, shipment scanning and more, and all provided as standard product.

iSC

With iSC, supply chain management has never before been this easy and affordable. iSC allows you to electronically communicate your demand stream to your suppliers. Purchase orders, forecasts, shipping schedules, acknowledgements, invoices and advance shipping notices are all supported as standard product.

Predefined gateways are used to manage the flow of the supply chain information into and out of your enterprise application. Forecasts and delivery schedules can be communicated automatically to your suppliers, eliminating manual processes.

Supplier performance ratings and graphical dashboards are built into iSC, so you know when suppliers are reviewing and responding to your schedules. No supplier licensing cost makes iSC easy for your suppliers to use.



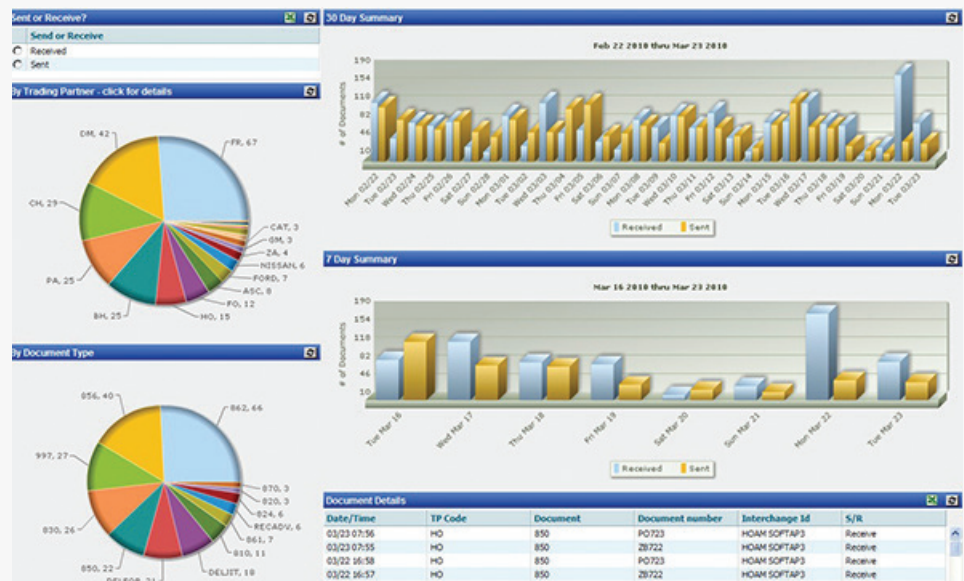
EDI Dashboard Reporting

Business Activity Monitor

It can be a challenge to track your key metrics without negatively impacting productivity. Radley's Business Activity Monitor (BAM) puts real-time business intelligence at your fingertips in an easily understandable graphical format. Alerts can be displayed on a dashboard, sent by email, text message, or pushed to a mobile device.

iScheduler

Radley EDI Platform components utilize iScheduler to automate and manage repetitive activities. EDI communications, scheduled reporting, and integration to enterprise applications are some of the tasks that are handed off to iScheduler.



Other EDI productivity solutions from Radley

EDI Managed Services (EMS)

Focus on what you do best and leave EDI to Radley! Our experienced EDI analysts leverage the latest B2B EDI technology to remotely manage your business processes after developing a plan personalized to meet your unique needs and budget.

Value Added Network (VAN) Services

Cost savings, Radley's superb standard support service and easy migration! Isn't it time to reduce your EDI communications overhead?

EasyLink®

Radley has partnered with EasyLink Services International Corporation to offer a cost-effective, internet-based Value Added Network (VAN). The quick and easy transition from your current VAN to EasyLink Services will be transparent to your trading partners. You are sure to experience immediate and significant savings with our low fixed per-kilo-character cost.

Training & Support

Knowledgeable and confident workers improve productivity and maximize your investment. Radley offers a variety of training options to meet your unique needs; remote and on-site training is available for all Radley products.

Getting started with Radley EDI

All components of Radley's EDI Platform provide you with the ability to select the deployment methodology you prefer. Radley's EDI Platform is a true multi-tenant web application. No software installation, no software maintenance contracts, no hardware to purchase or maintain, and no software patches to install or test. Just access the software when you need it.

Technical Requirements

On-Premise

Server Requirements:

- Windows 2012 R2 with Microsoft IIS or higher
- Recommended Minimum Memory on server: 16GB

- Recommended disk space on server: 750MB + 100MB times the number of company databases
- Recommended Minimum Processor Speed: Multi-core CPU 2 GHZ

Client Requirements:

- Microsoft Edge (Chromium) or Google Chrome
- Adobe Acrobat Reader or other PDF reader
- Microsoft Excel 2013 or higher (required if using spreadsheets)

On-Demand

Client Requirements:

- Microsoft Edge (Chromium) or Google Chrome
- Adobe Acrobat Reader, or other PDF reader
- Microsoft Excel 2013 or higher (required if using spreadsheets)

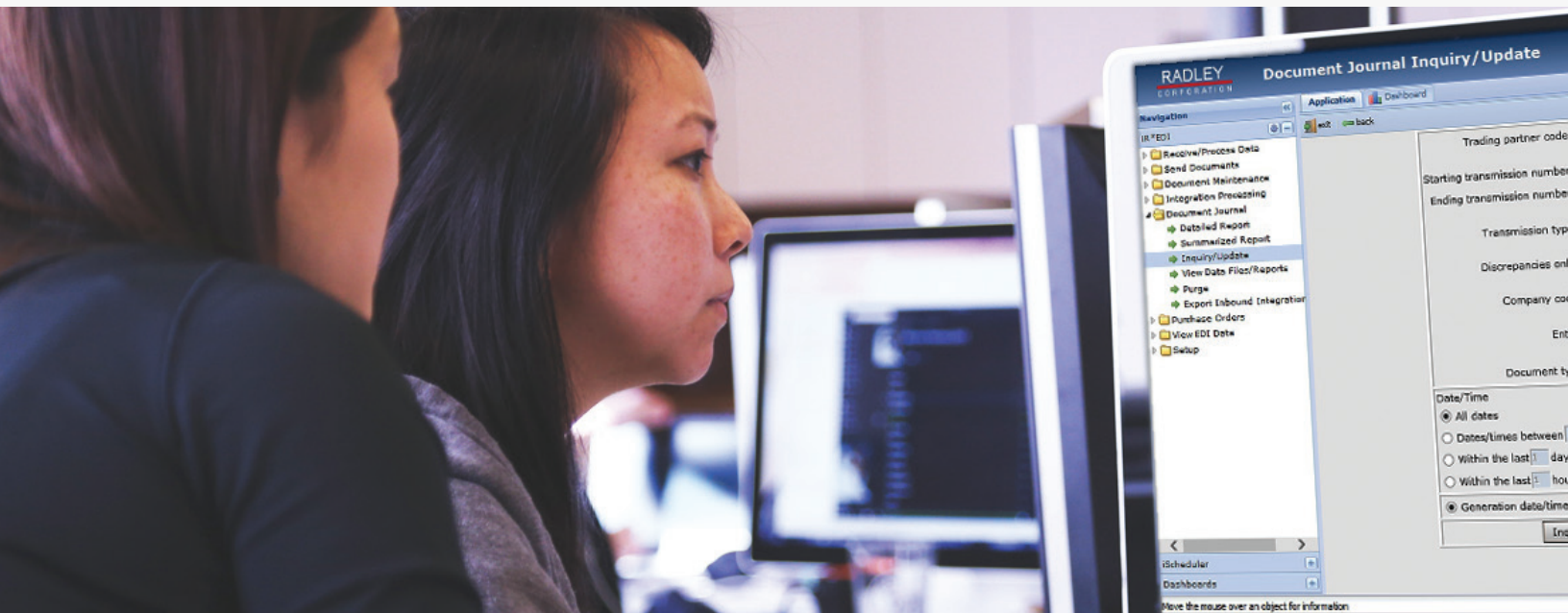
On Any Cloud

Server Requirements:

- Windows 2012 R2 with Microsoft IIS or higher
- Recommended Minimum Memory on server: 16GB
- Recommended disk space on server: 750MB + 100MB times the number of company databases
- Recommended Minimum Processor Speed: Multi-core CPU 2 GHZ

Client Requirements:

- Microsoft Edge (Chromium) or Google Chrome
- Adobe Acrobat Reader or other PDF reader
- Microsoft Excel 2013 or higher (required if using spreadsheets)



Ready to get started with Radley EDI?

Learn more at
radley.com/edi-solutions